

REF NO: GC - 126 (REV A)

Name: **GIGGLE CITY**

Address: **MIAMI,
FL,**

Date: **30/08/07**

Designer: **CHRIS WOODWARD**



Soft Contained Play Units

MAIN AREA

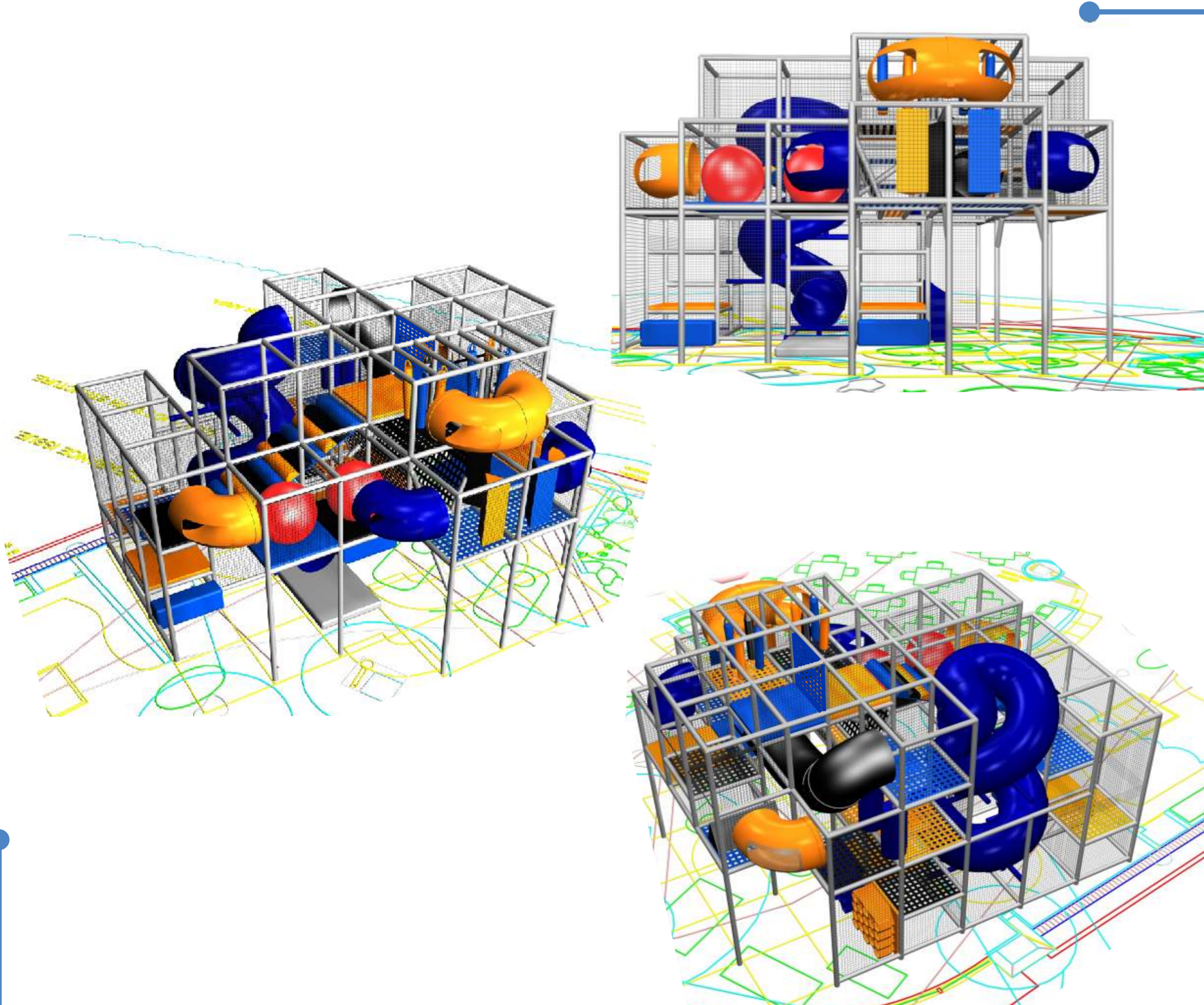
CONTENTS LIST

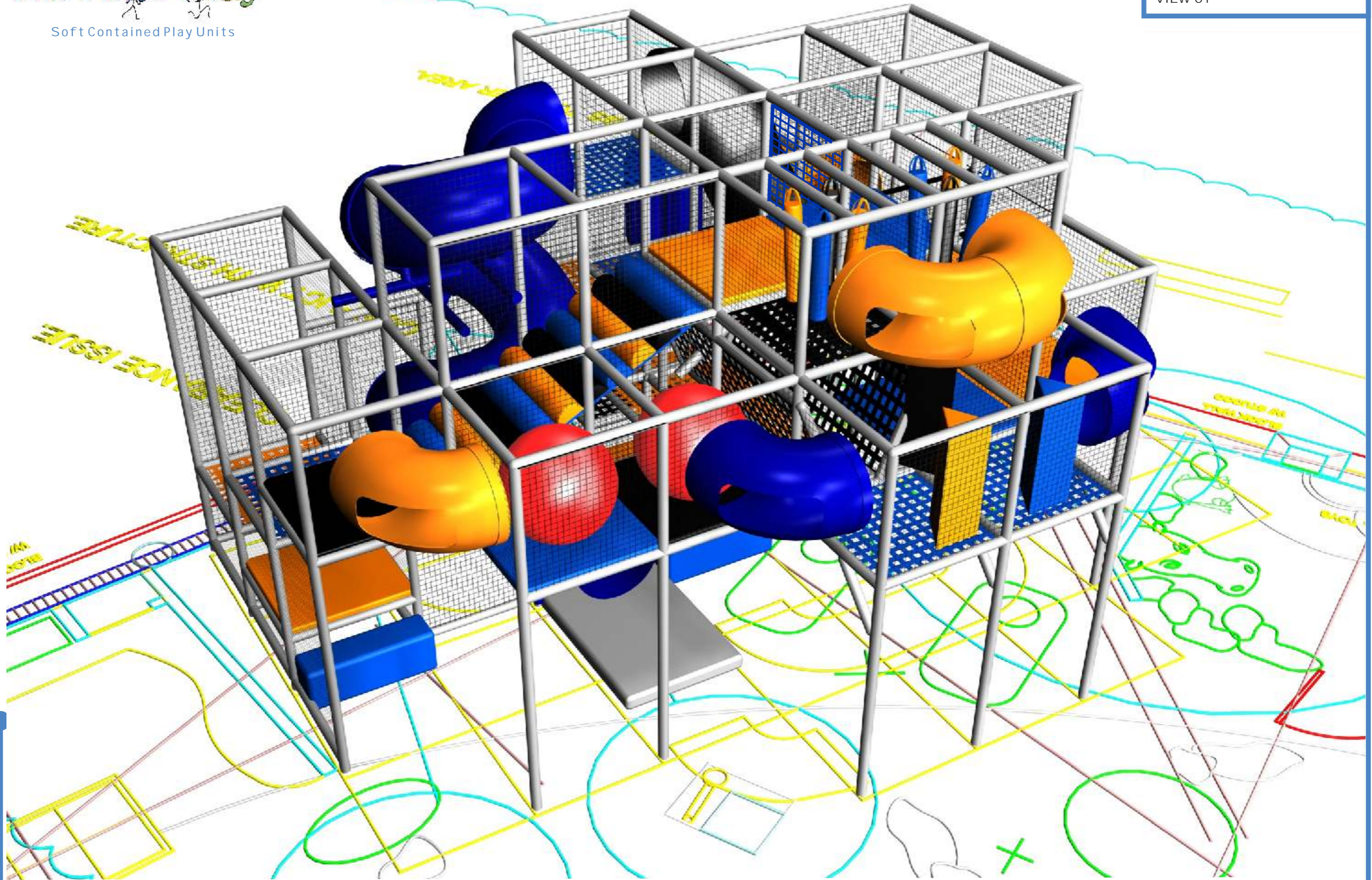
1. SUPPORT VERT STEELS
2. ELBOW SUPPORTS
3. HEX SHOE CUBBIE
4. 3 LEV SPIRAL SLIDE
5. LANDING PAD
6. WEB ELEVATOR
7. DECK
8. INFLATABLE BALL
9. 90 DEG CRAWL TUBE W/WIN
10. TRIPLE S-TUBE W/WIN
11. WEB DECK
12. 90 SLIDE
13. THIN WEB BRIDGE
14. MOONWALK
15. FOAM FOREST
16. TRI SQUEEZE MAZE
17. TRI CRAWL OVER
18. SLIDE SUPPORT STEELS
19. CARGO CRAWL THRU
20. U -TUBE CRAWL W/WIN
21. BOAT BUMPER

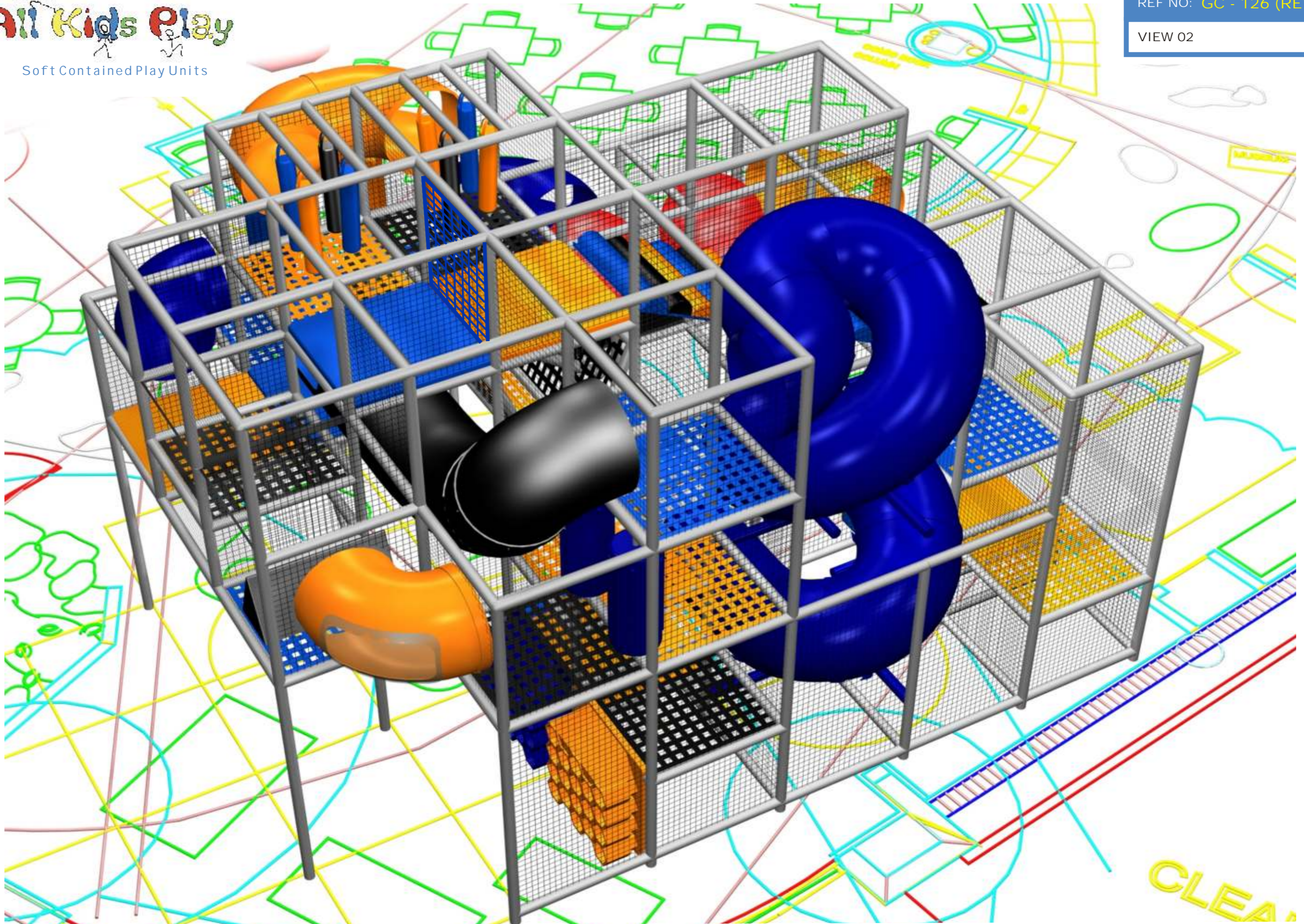
FOOTPRINT (LXW) : 24' x 20'

STRUCTURE HEIGHT : 15' 3"

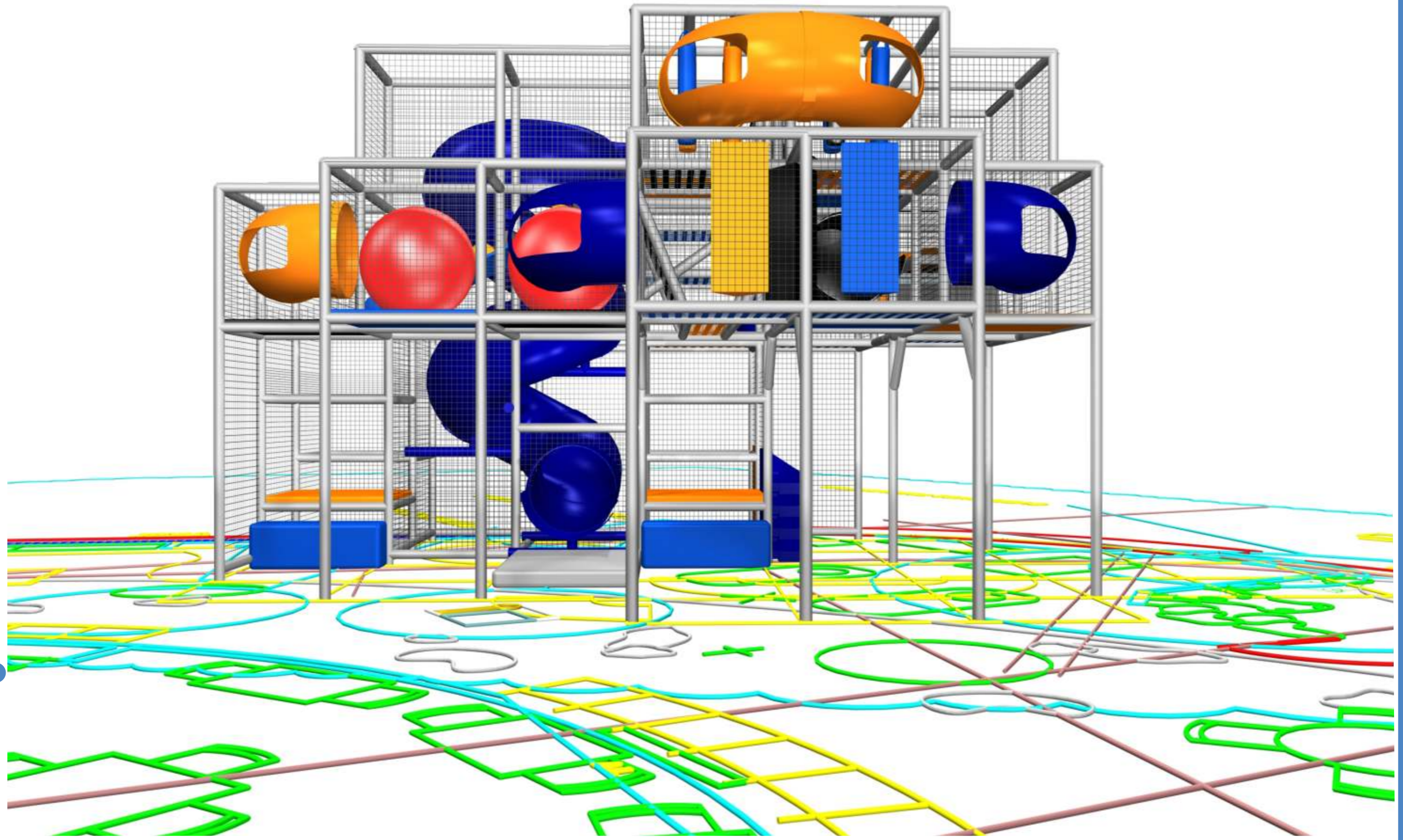
CONCEPT : CORP COLORS

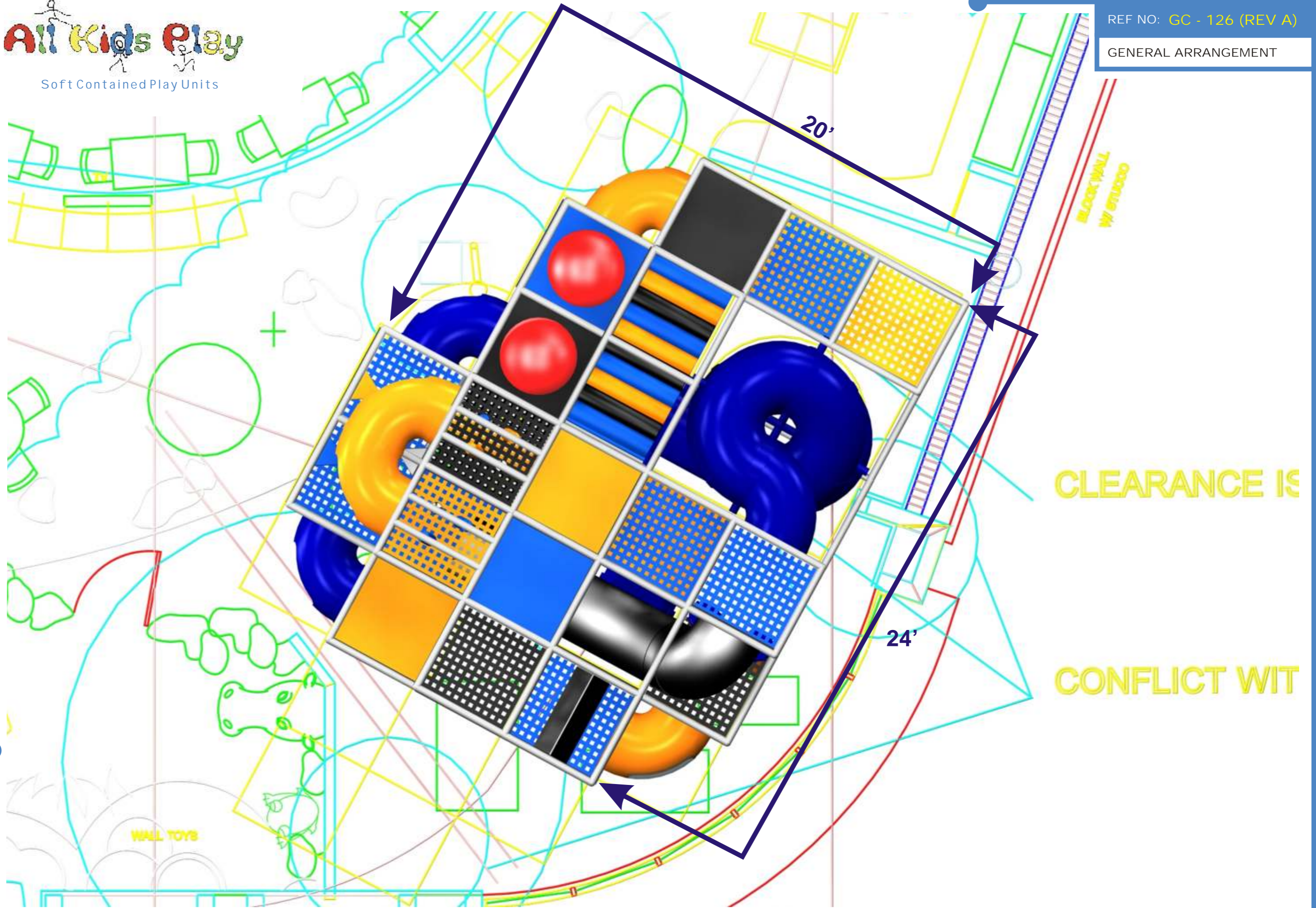






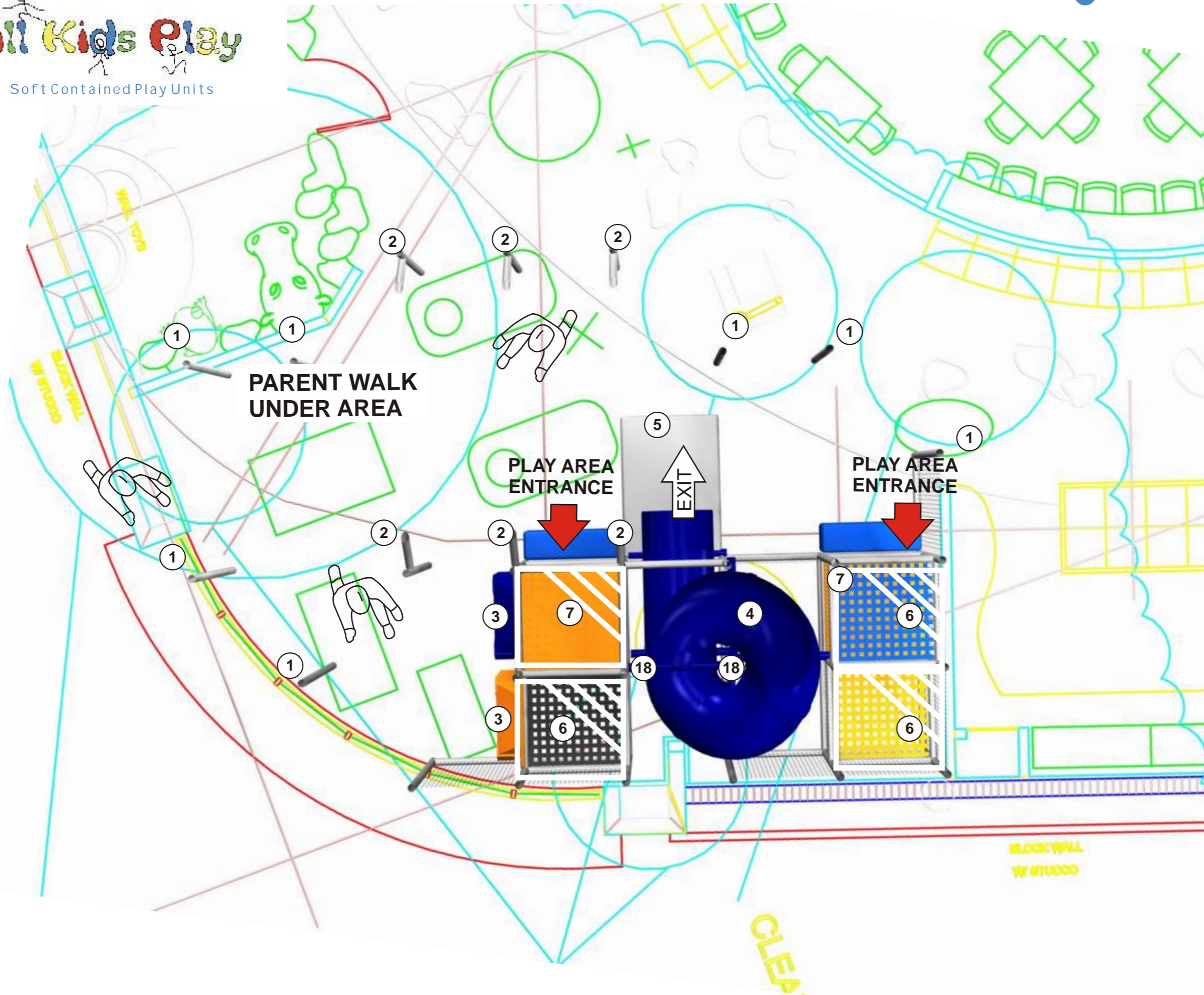
CLEAN





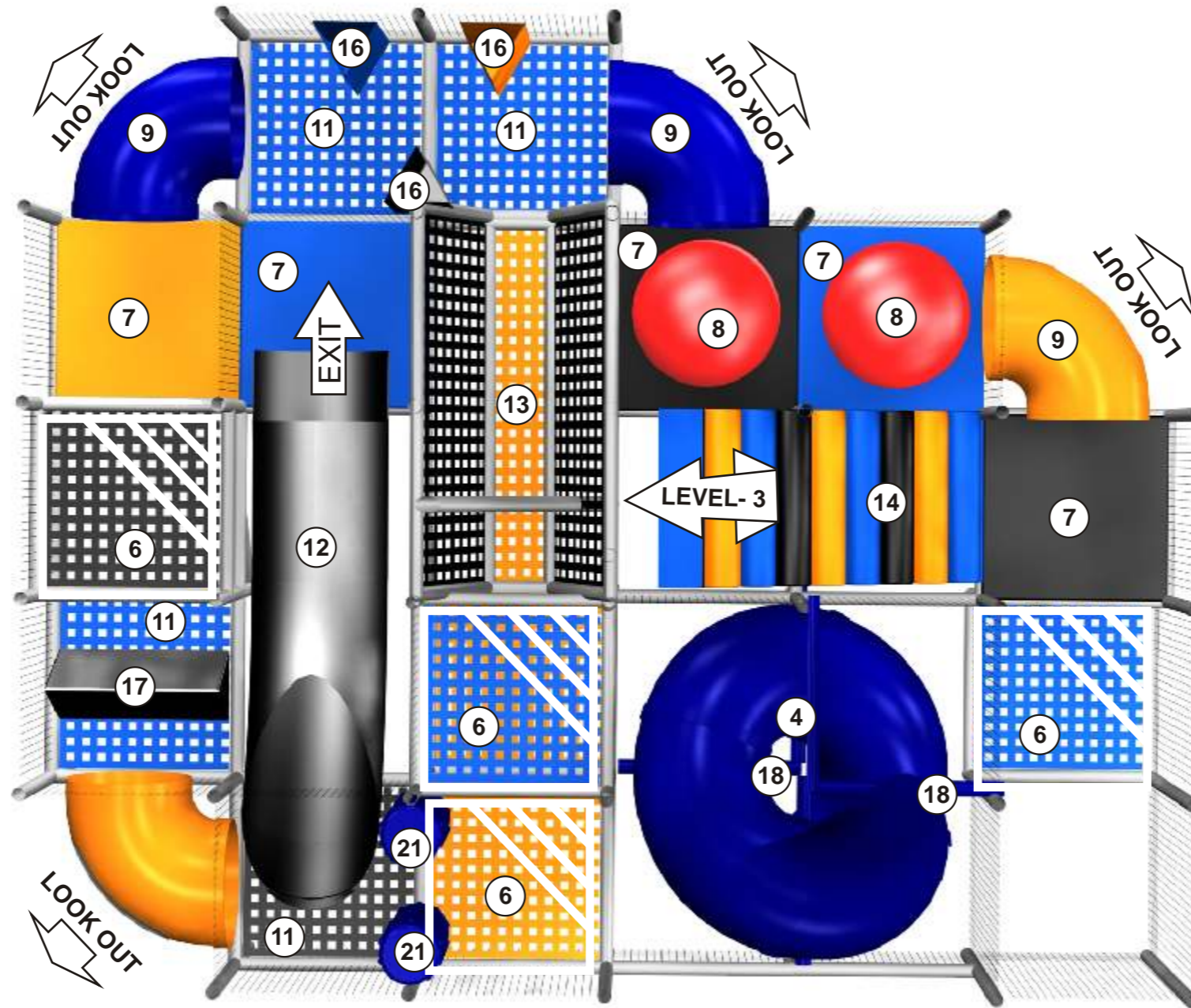
Legend:

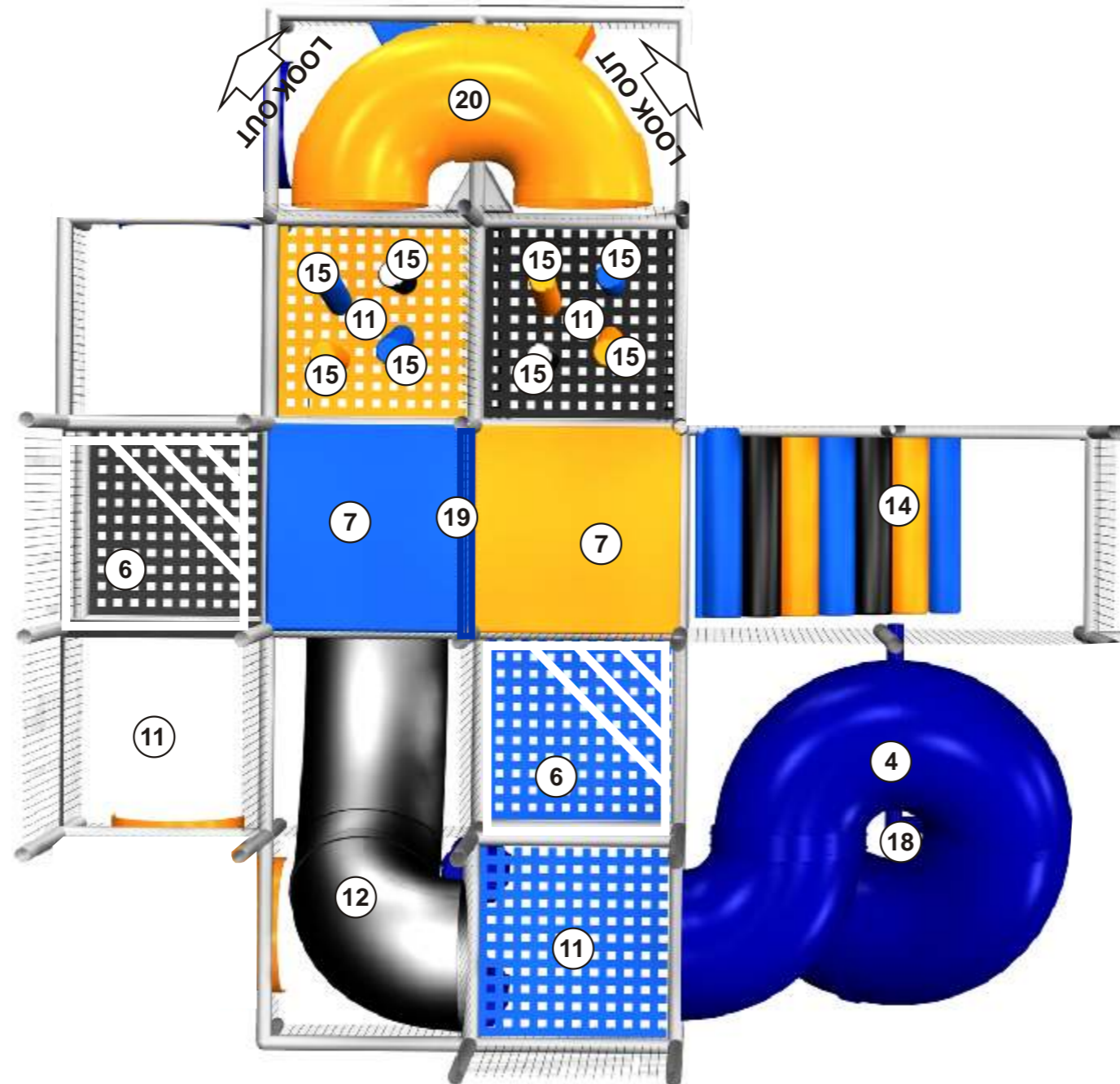
1. SUPPORT VERT STEELS
2. ELBOW SUPPORTS
3. HEX SHOE CUBBIE
4. 3 LEV SPIRAL SLIDE
5. LANDING PAD
6. WEB ELEVATOR
7. DECK
8. INFLATABLE BALL
9. 90 DEG CRAWL TUBE W/WIN
10. TRIPLE S-TUBE W/WIN
11. WEB DECK
12. 90 SLIDE
13. THIN WEB BRIDGE
14. MOONWALK
15. FOAM FOREST
16. TRI SQUEEZE MAZE
17. TRI CRAWL OVER
18. UPRIGHT WEB
19. CARGO CRAWL THRU
20. U -TUBE CRAWL W/WIN
21. BOAT BUMPER



Legend:

1. SUPPORT VERT STEELS
2. ELBOW SUPPORTS
3. HEX SHOE CUBBIE
4. 3 LEV SPIRAL SLIDE
5. LANDING PAD
6. WEB ELEVATOR
7. DECK
8. INFLATABLE BALL
9. 90 DEG CRAWL TUBE W/WIN
10. TRIPLE S-TUBE W/WIN
11. WEB DECK
12. 90 SLIDE
13. THIN WEB BRIDGE
14. MOONWALK
15. FOAM FOREST
16. TRI SQUEEZE MAZE
17. TRI CRAWL OVER
18. UPRIGHT WEB
19. CARGO CRAWL THRU
20. U -TUBE CRAWL W/WIN
21. BOAT BUMPER





Legend:

1. SUPPORT VERT STEELS
2. ELBOW SUPPORTS
3. HEX SHOE CUBBIE
4. 3 LEV SPIRAL SLIDE
5. LANDING PAD
6. WEB ELEVATOR
7. DECK
8. INFLATABLE BALL
9. 90 DEG CRAWL TUBE W/WIN
10. TRIPLE S-TUBE W/WIN
11. WEB DECK
12. 90 SLIDE
13. THIN WEB BRIDGE
14. MOONWALK
15. FOAM FOREST
16. TRI SQUEEZE MAZE
17. TRI CRAWL OVER
18. SLIDE SUPPORT STEELS
19. CARGO CRAWL THRU
20. U -TUBE CRAWL W/WIN
21. BOAT BUMPER

