

REF NO: **KCDC - 142 (REV A)**

Name: **KID'S CHOICE DAY CARE**

Address: Media,
PA

Date: **13/04/10**

Designer: **CPW**



The logo consists of the words "All Kids Play" in a playful, rounded font. Each letter is a different color: 'A' is red, 'l' is green, 'l' is blue, 'K' is yellow, 'i' is red, 'd' is blue, 's' is green, 'P' is red, 'l' is blue, 'a' is yellow, and 'y' is green. Three simple black stick figures are integrated into the text: one is positioned above the second 'l', another is below the 'd', and a third is below the 'P'. Below the main text, the words "Soft Contained Play Units" are written in a simple, blue, sans-serif font.

Soft Contained Play Units

MAIN AREA

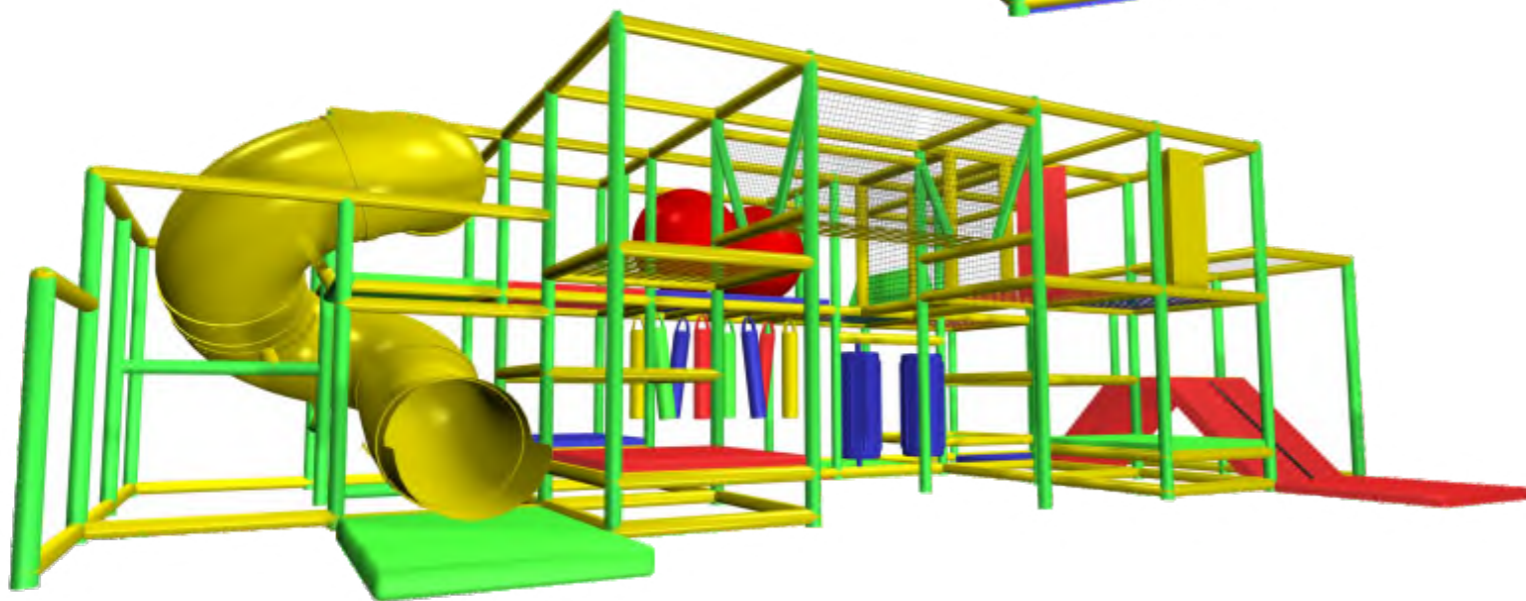
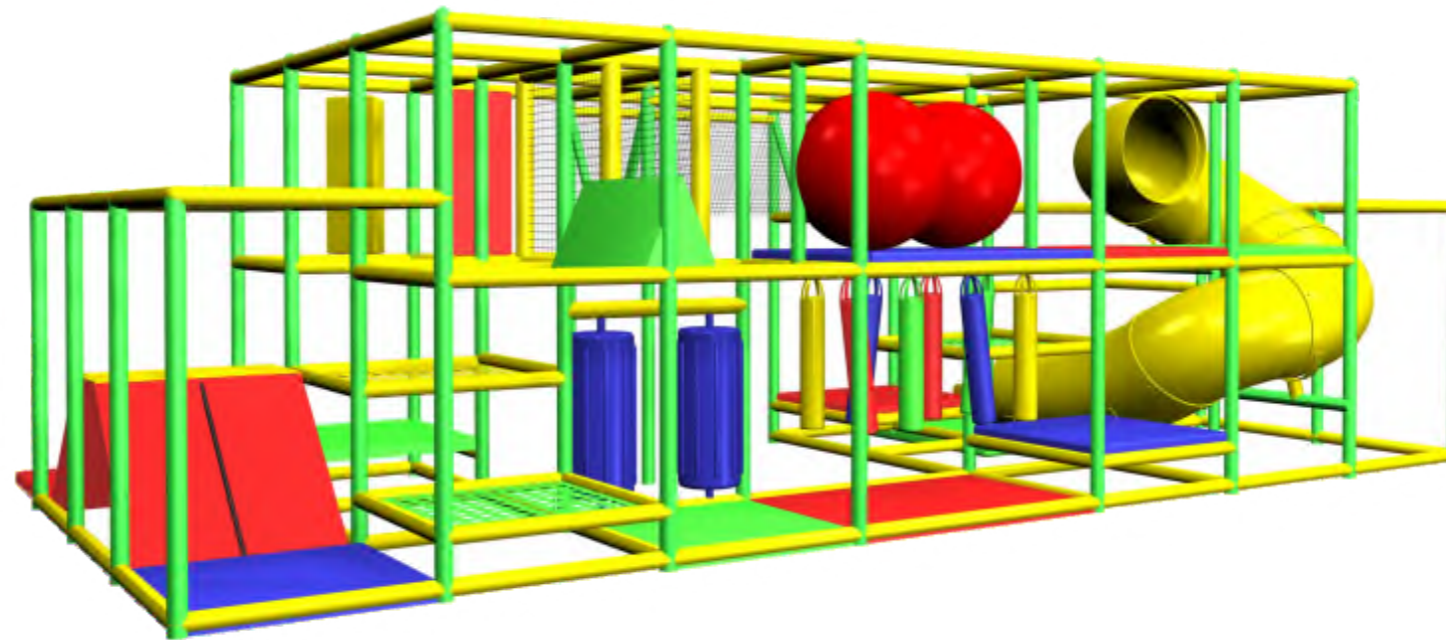
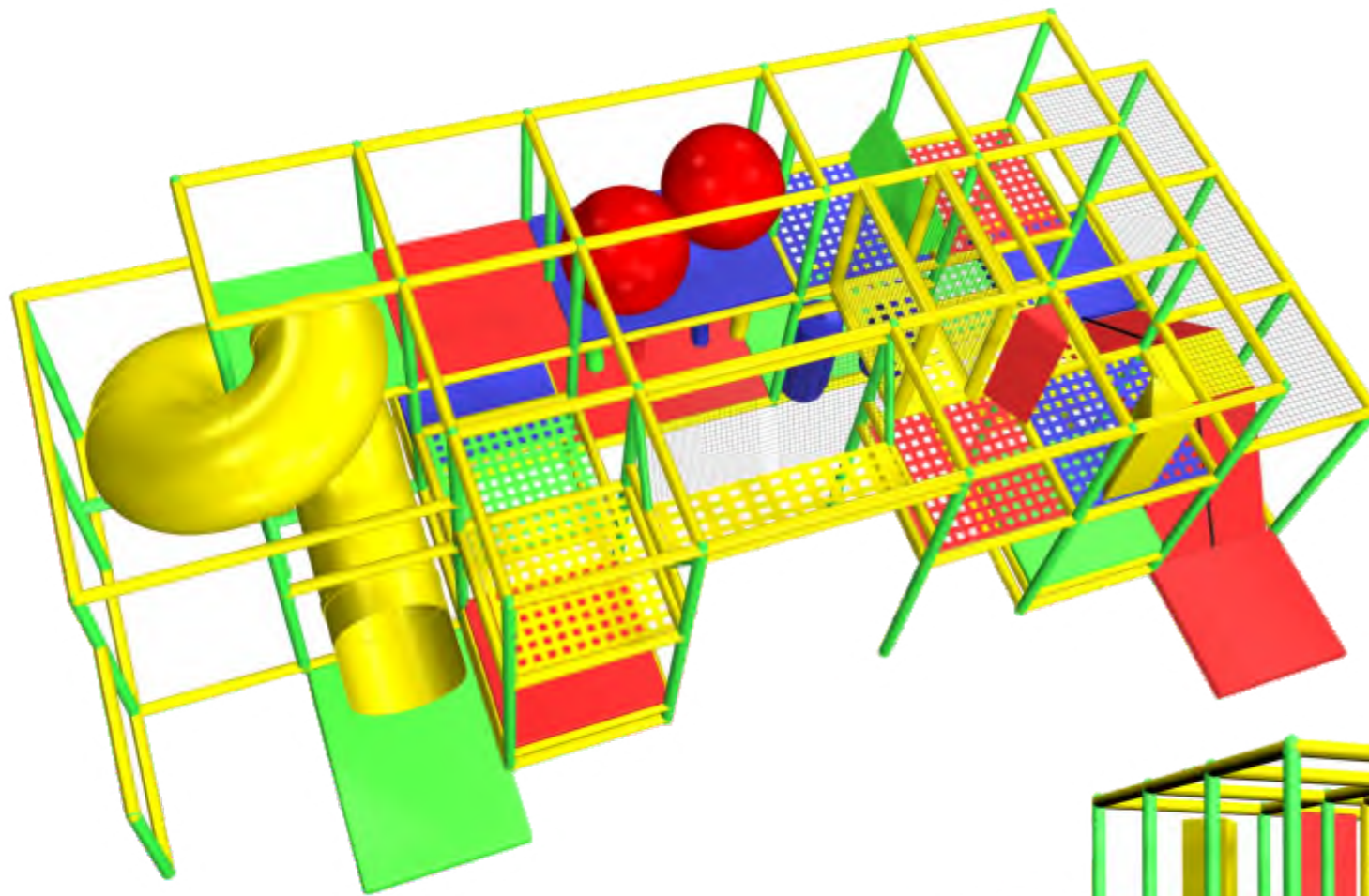
CONTENTS LIST

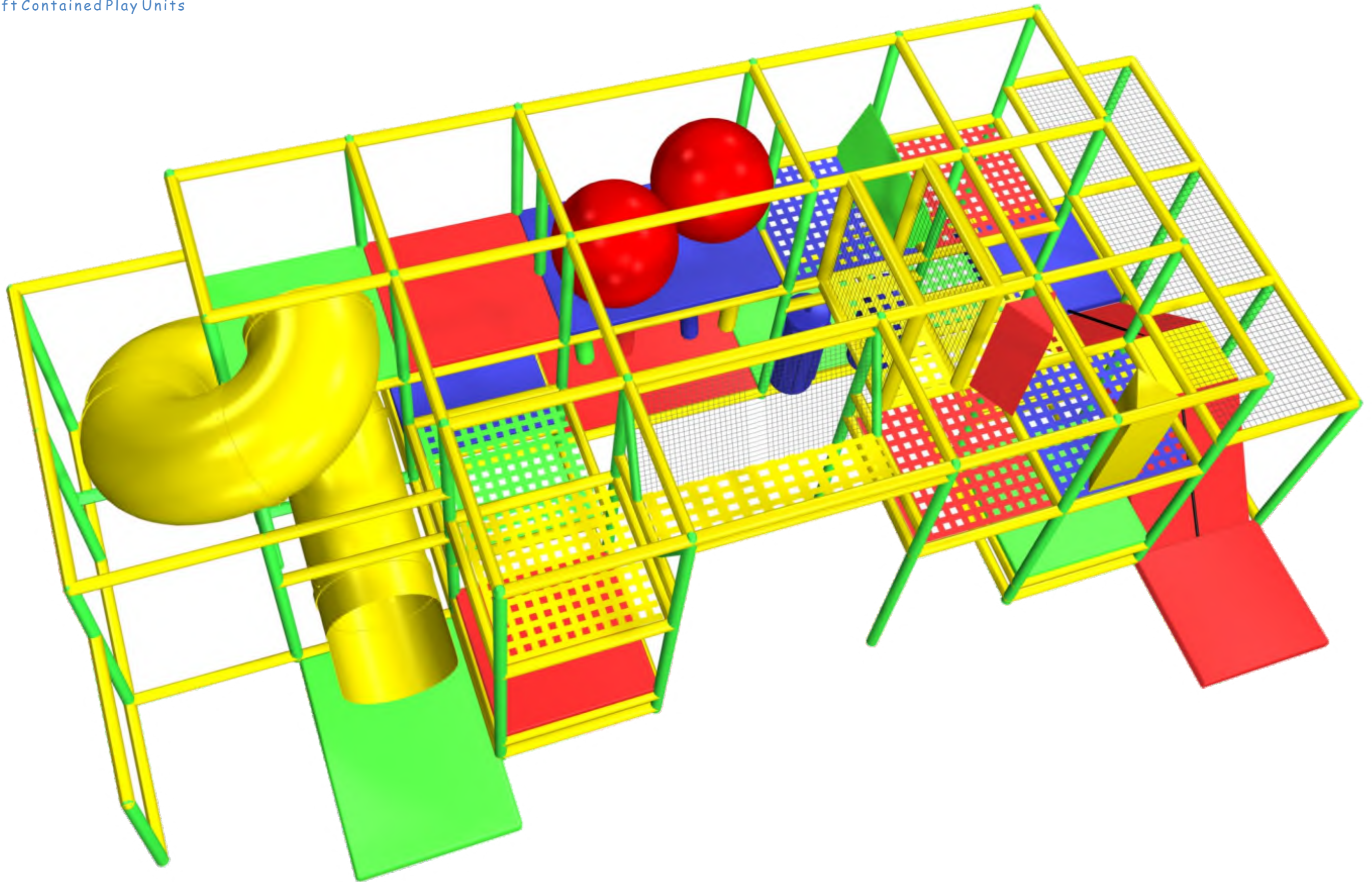
1. SPIRAL TUBE SLIDE
2. LANDING MAT
3. HEX SHOE CUBBIE
4. DECK
5. DANGLY SNAKES
6. FLOOR PAD
7. BOAT BUMPER
8. WEB ELEVATOR
9. WEB DECK
10. TARZAN CLIMB
11. FENCING
12. SUPPORT STEEL
13. INFLATABLE BALL
14. 28 in WEB TUNNEL
15. TRI CLIMB OVER
16. ROOF NETTING
17. TRI SQUEEZE
18. 16in WEB BRIDGE

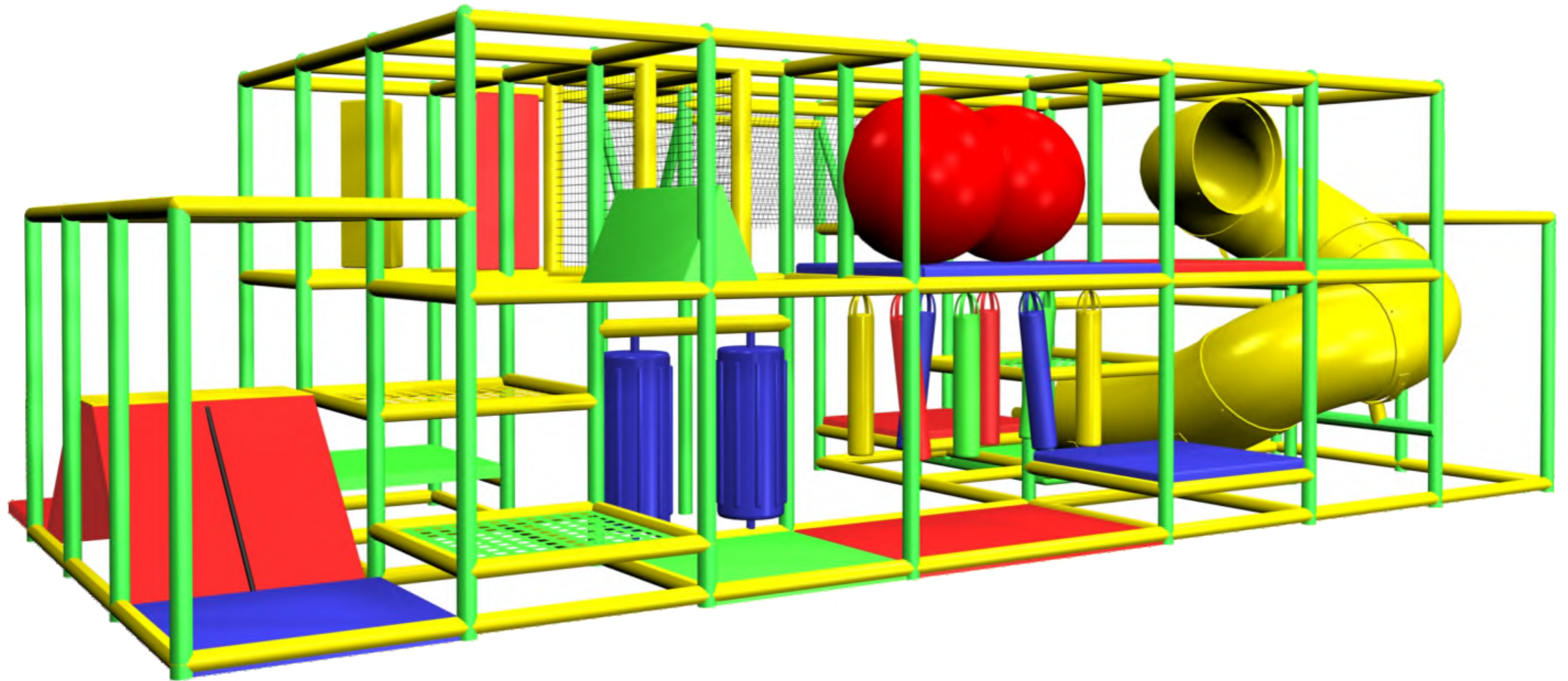
FOOTPRINT (LXW) : 30' x 12'

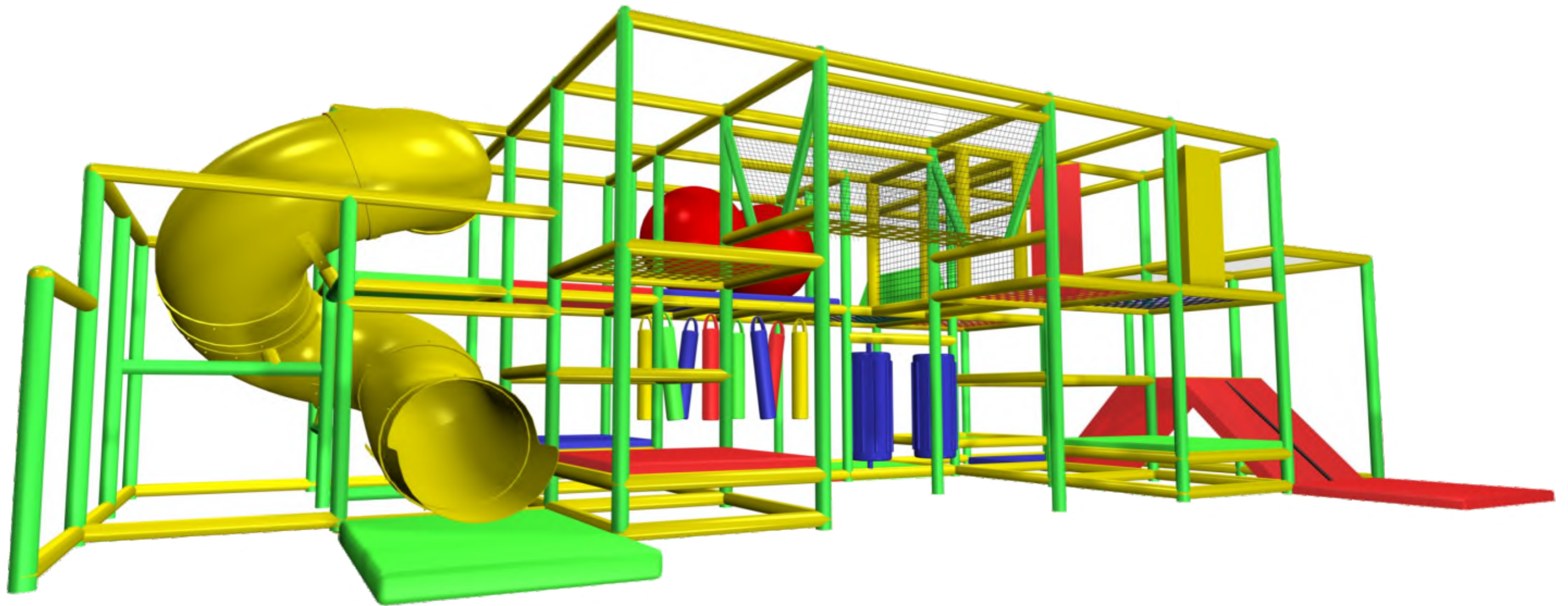
STRUCTURE HEIGHT : 9'

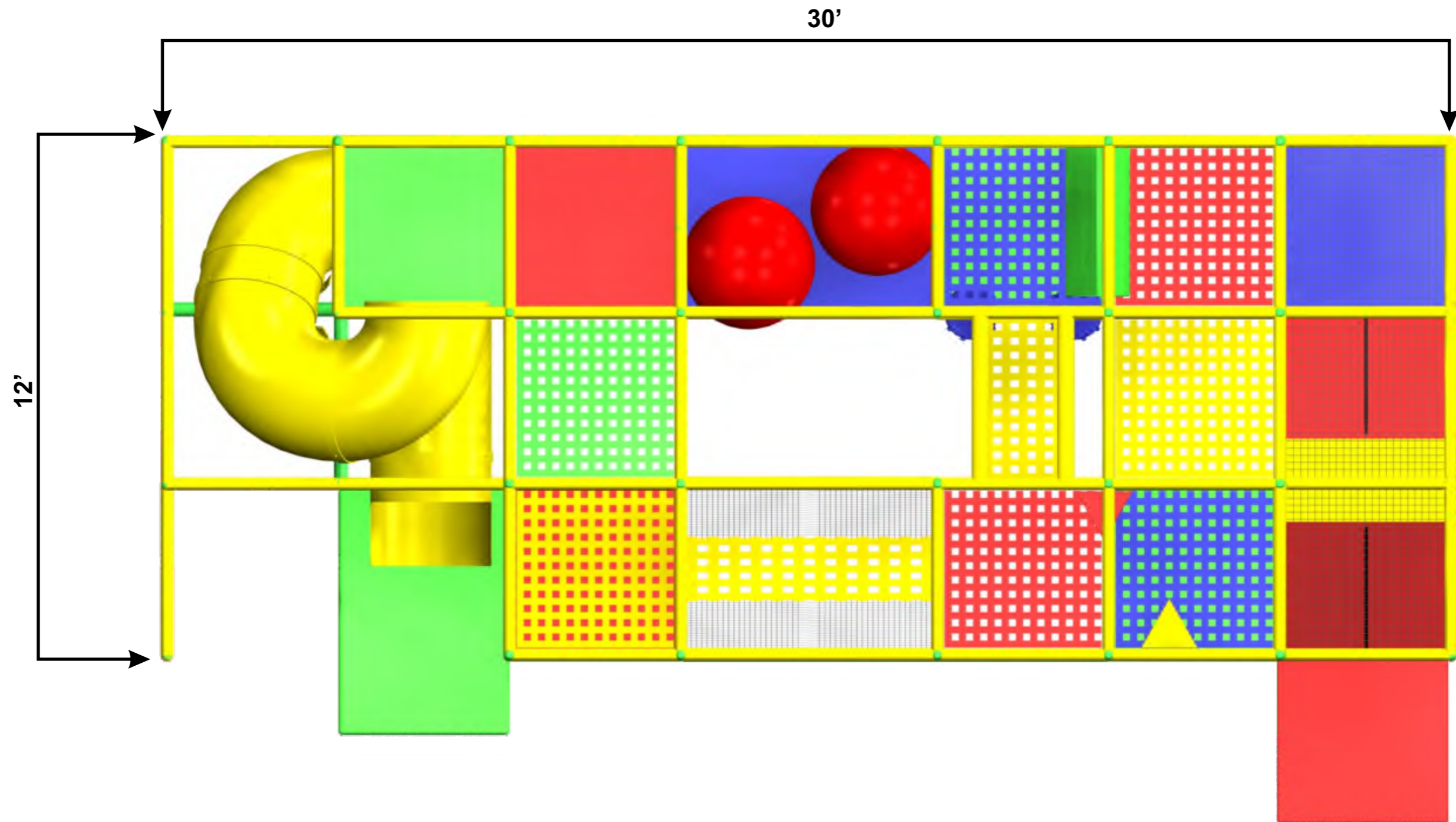
CONCEPT :











LEVEL 02:

Legend:

1. SPIRAL TUBE SLIDE
2. LANDING MAT
3. HEX SHOE CUBBIE
4. DECK
5. DANGLY SNAKES
6. FLOOR PAD
7. BOAT BUMPER
8. WEB ELEVATOR
9. WEB DECK
10. TARZAN CLIMB
11. FENCING
12. SUPPORT STEEL
13. INFLATABLE BALL
14. 28 in WEB TUNNEL
15. TRI CLIMB OVER
16. ROOF NETTING
17. TRI SQUEEZE
18. 16in WEB BRIDGE

